

# ST-500I/ST-500R

**Inspect/Repair System with ST-500**



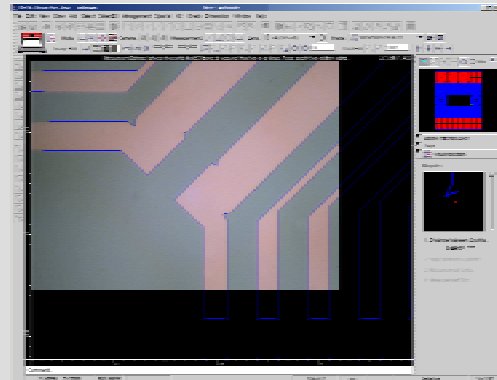
X-Y Stage machining for glass mask

Stella Corporation

# Inspect Vision

- Motion control mode enables you to operate CCD camera connected to ST500 very easily, you may take a photograph checking the plate surface by naked eyes on the screen with this function.
- You can inspect the inspection pattern loaded by CCD camera equipped on ST500 and original CAD pattern loaded from Inspection vision overlapping both of them each other. In addition, it is possible to identify the difference between CAD pattern that will be the patterning basis and the actual drawing pattern.

Superimpose mode



- The pattern on the screen can be measured by four methods.
- User-friendly software application GUI
- User may customize by acceleration adjustment or XY alignment function.
- From the snapshot image captured in motion control mode, or two-value image of the read data, a substrate pattern thin or thick and the open part or short circuit part are detected.

# Repair Vision

- Nd:Yag (Q switch) laser mounted for its reliability and sharp cut edge.

## Laser

Q switch, Yag laser (532 nm) for chrome defects.

## Option function

- Gold, or Palladium paste  
MEK (Methyl Ethyl Ketone ) (for lens cleaning)
- Nitrogen  
(For lens cleaning during chrome defect process.)



# ST-500I/ST-500R

	ST-500I/ ST-500R
Stage area	
XY stage drive	Stepping motor (micro-step control)
Min. shift distance	0.1 $\mu\text{m}$
Driving speed	Max.150 mm / sec.
Position accuracy	$\pm 5 \mu\text{m}$
Process area	500 mm $\times$ 500 mm
Work size mountable	700 mm $\times$ 500 mm
Size & weight	
Size (W $\times$ D $\times$ H)	1100 mm $\times$ 1250 mm $\times$ 1700 mm
Weight	250 kg
Electricity consumption	2 KVA
Heat capacity	929 Kcal / h
Controller	
Controller PC	IBM / AT compatible machine (Intel Pentium® 4)
OS	Windows®
Software function	Coordinate specification (absolute, relative setting), Speed control, Alignment customization (theta, scale), Read-in outer files (coordinate data) etc.



## Stella Corporation

1-1544-7 Kaijincho-minami,

Funabashi, Chiba, zip273-0024 Japan

Tel: 047-432-5031 Fax: 047-432-5032

mail: stl@stellacorp.co.jp support@stellacorp.co.jp

web: [www.stellacorp.co.jp](http://www.stellacorp.co.jp)